



Dana SAC Norway
Products & Services Overview
Gearboxes, Hydraulics & Winches

BREVINI®

PIV®

SPICER®

SALES

Managing sales, support and logistics for the complete range of products.

SERVICE

Servicing of gearboxes, winches and hydraulic components of all brands.

SOLUTIONS

Hydraulic, mechanical and electrical solutions for drivetrain and motion control.



MULTI SECTOR EXPERTISE



Agriculture

Our unique offering of mechanical transmission and fluid power components allows us to supply complete solutions for the Agricultural machinery market. The Brevini® and Spicer® products are used in many applications including Harvesters, Sprayers, Feeders and Hedge Cutters.



Industrial and stationary equipment

Our range of gearboxes and hydraulics offers reliable solutions to guarantee high productivity and low maintenance costs. This is backed up by aftersales and service specifically in sectors such as the steel processing industry as well as many other sectors.



Green Technologies

Reliability and low maintenance is a key requirement for applications such as wind turbines. Brevini® Yaw and Pitch drive gearboxes are used by many of the major wind turbine OEM's. Our service division also has a vast experience of servicing gearboxes for the main drives as well as the Yaw and Pitch.



Heavy duty

Our extensive range of gearboxes with torque ratings up to 3 million Nm, gives us a unique offering to provide solutions for heavy duty applications. Our qualified and experienced engineers are able to ensure we provide the correct solution for the machine, as well as our service team supporting the full life cycle after supply.



Marine

Brevini® planetary gearboxes have been used in the Marine and Offshore Market for many years. In applications such as winches and cranes we are able to support the correct specifications and certifications required in this market. Combined with our range of fluid power solutions we are able to work with OEM's to provide safe and reliable solutions for their applications.



Mobile and infrastructure

With the combination of the range of Spicer® and Brevini® products we are one of the only manufacturers to be able to provide solutions for the travel and work functions for mobile machinery. Our products provide safe and reliable solutions for applications including access work platforms, construction machinery and airport handling equipment.

OUR VALUE PROPOSITION

The Dana Service and Assembly Centre Norway has built up strong competence of supplying Norwegian industry with reliable solutions for many types of machinery.

Our comprehensive range of mechanical power transmission solutions combined with our range of hydraulic and electronic products, gives us a unique offering for machinery manufacturers.

Our investment in skilled personnel based in Norway, ensures we can offer our customers full pre and post-sales support of the entire Dana Brevini motion systems product range.

High quality power transmission systems

The Dana Brevini Motion Systems line of power-transmission technologies is relied upon around the globe.

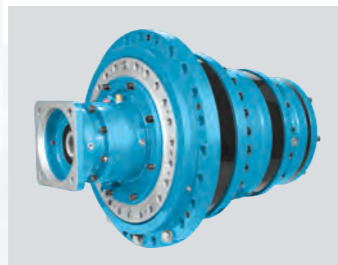
Our comprehensive range of power transmission solutions are supplied and supported by the Dana Service and Assembly Centres.

Manufactured to Dana's high quality global standards with full traceability, we can supply certified solutions for market requirements.



Standard Winches

Standard winches from 0.5 ton up to 16 ton hoisting, fitted with hydraulic motors. Compact design and available with all standard option as groove, pressure roller and limit switches.



Winch Drives

Series	T _{STAT} (Nm)
PWD2100	10000
PWD3150	20000
PWD3200	25000
PWD3300	36000
PWD3500	45000
PWD3700	70000
SLW3003	85000
SLW4003	105000
SLW6003	165000
SLW8503	190000
SMW12004	300000
SMW18004	390000
SMW25004	590000
SMW35004	850000

Industrial Planetary Gearboxes

Series	I _{eff}	T _N (Nm)
010	3.38-3282	1000
020	3.08-3235	2100
030	15.37-3097	3800
040	15.37-3170	3800
045	3.50-3301	3800
046	3.08-3301	3800
065	3.50-3170	6400
067	12.25-201.0	6400
090	4.08-3207	9200
091	11.22-42.37	9200
150	3.90-3460	13000
155	19.50-272.7	13000
250	4.04-2741	20000
255	16.48-2744	20000
320	19.95-245.3	25000

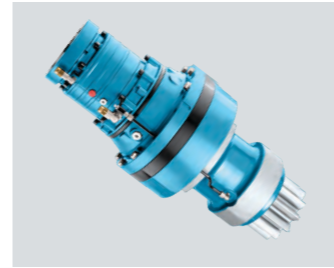
High Torque Planetary Gearboxes

Series	I _{eff}	T _N (Nm)
S300	4.04-2401	34000
S400	4.18-1958	48000
S600	4.18-2785	64000
S850	4.18-1987	90000
S1200	4.18-1620	133000
S1800	4.18-2305	190000
S2500	4.18-1987	260000
S3500	4.18-1620	370000
S5000	76.01-1338	530000
S7500	20-7800	735000
S10000	85-6500	1035000
S15000	90-6600	1500000
S20000	100-8000	2170000

Standard & custom-built winches & winch drives

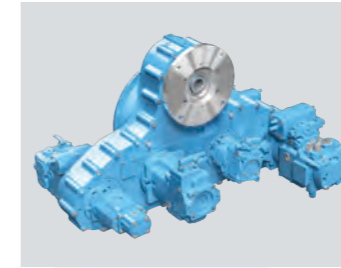
Winch drives and complete winches for lifting applications. These can be supplied with certification where required.

The technical data pages contain information regarding dimensions, performance etc. This data should be used as a guideline only, definitive data can be obtained from our sales office.



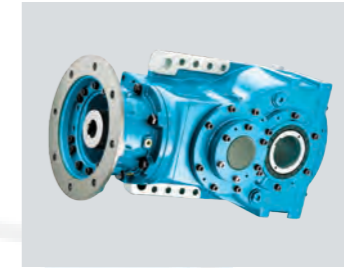
Planetary Slewing Drives

Series	T _{2 max} (Nm)	T _{FEM T5(M5-L2)} (Nm)
RPR046DC	6000	3400÷5550
RPR065DC	11500	6600÷9550
RPR150DC	23000	13450÷18100
RPR250DC	37000÷46200	21350÷29450
RPR255DC	37000÷46200	21350÷29450
RPR320DC	46200	21000÷33850
SLS300DC	53800÷74600	31850÷48700
SLS400DC	72000÷100000	39950÷61400
SLS600DC	165000	-
SLS850DC	200000	-



Pump Drives

Series	P _m (kW)	P _T (kW)
BZ2-265	110	40
BZ3-265	130	45
BZ2-290	170	50
BZ3-290	190	55
BZ2-340	220	70
BZ3-340	240	80
BZ2-470	380	130
BZ3-470	420	150
BZ4-470	480	160
BZ7-470	500	175



BPH Series Compact Shaft-mounted Gearboxes

Series	P _m (kW)	P _T (kW)
BPH.13	3900	70
BPH.16	5800	70
BPH.18	7700	80
BPH.20	10900	90
BPH.23	16700	100
BPH.25	24200	120
BPH.28	35000	140



Slew Bearings

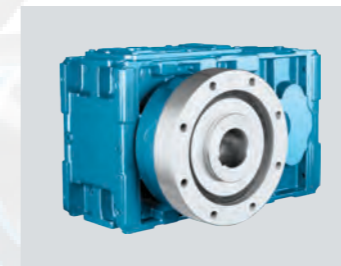
Slewing Bearings supplied by La Leonessa:

- From 300mm to 3200mm OD
- Internal and external geared, and no gear
- Ball bearing - single and double row
- Roller bearing - single row
- Material certification



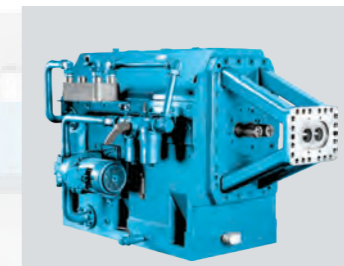
Helical & Bevel Helical Gearboxes

Series	Nominal Torque (Nm)
22	16800
25	24600
28	33900
31	47000
35	60400
40	79000
42	105000
45	134000
47	164000
50	194000
53	239000
56	297000
60	343000
63	416000
67	483000
71	555000
75	645000
80	720000
85	805000



Single Screw Extruder Drives

Series	Nominal Torque (Nm)
22	16800
25	24600
28	33900
31	47000
35	60400
40	79000
42	105000
45	134000
47	164000
50	194000
53	239000



Twin Screw Extruder Drives

Technical Data	
Screw Diameter [mm]	20 to 250
Centre distance [mm]	15 to 200
Power [kW]	up to 5500
Ratio	1.25 to 5.6
Output Speed [rpm]	up to 1800
Output torque per shaft [Nm]	up to 35000
Axial thrust capacity (kN)	up to 250
Efficiency	up to 98%



Gearmotors

We are pleased to announce that a new product family is now in our portfolio, with the following range build up:

- Shaft mounted and flange mounted parallel helical gearmotors, up to 18k Nm.
- Foot mounted and flange mounted helical inline gearmotors, up to 18k Nm.
- Bevel helical gearmotors, up to 15k Nm.

Product range

Dana Brevini Winches & Winche drives

Dana SAC Norway offers a complete product and knowledge portfolio of winches and winch drives.



Line pull up to 40 ton winches (hoisting winches) are designed and produced completely in the Netherlands according customer demands. All winches can be certified according the latest rules of all known classification societies.

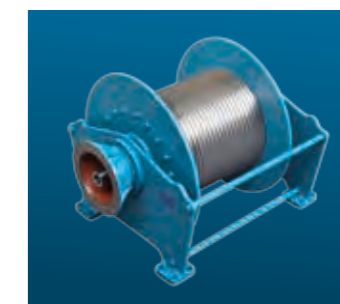
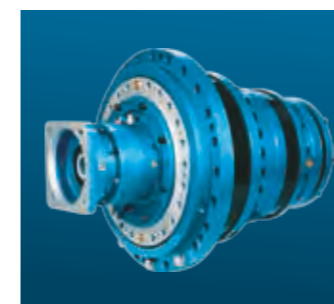
Specialized in

- hoisting and pulling applications
- ATEX
- personnel lifting
- offshore environment

Possible options

- spooling device
- special encoder/limit switch solutions
- stainless steel pressure roller
- helical grooved drum or (according) Lebus

The technical data pages contains information regarding dimensions, performance etc. This data should be used as a guideline only, definitive data can be obtained from our sales office.



Winch Drives

Serie	T _{STAT} (Nm)
PWD2100	10.000
PWD3150	20.000
PWD3200	25.000
PWD3300	36.000
PWD3500	45.000
PWD3700	70.000
SLW3003	85.000
SLW4003	105.000
SLW6003	165.000
SLW8503	190.000
SMW12004	300.000
SMW18004	390.000
SMW25004	590.000
SMW35004	850.000

Standard Winches

Standard winches from 0,5 ton up to 16 ton hoisting, fitted with hydraulic motors. Compact design and available with all standard option as groove, pressure roller and limit switches.

Custom-built Winches

Range from 0,5 ton up to 40 ton. Winches completely designed according customer demands. Hydraulically, electrically or pneumatically driven. If needed the (personnel lifting) winches can be class approved according the latest regulations. Lot of options as spooling device, load cell, encoder etc.

Hybrid Winches

Range from 2 ton up to 16 ton. Perfect combination of standard features with the flexibility to meet almost every demand Hydraulically, electrically or pneumatically driven. Available with all standard options as groove, pressure roller and limit switch.

Serie	Linepull
WPL100	3 tonnes
WPL150	4 tonnes
WPL200	5 tonnes
WPL300	7 tonnes
WPL500	10 tonnes
WPL700	14 tonnes
WPL850	16 tonnes

Advanced fluid power technologies

The Dana Brevini Motion Systems range of fluid power solutions gives a comprehensive offering for mobile and industrial applications. The Norwegian Service and Assembly Centre is able to supply and support this full range, and provide complete solutions for the motion of machinery.

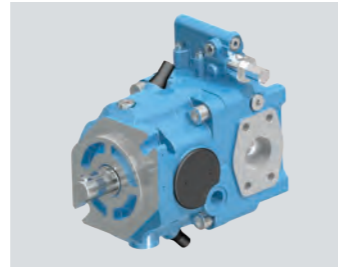
Pumps



Axial Piston Pumps

Variable displacement - closed loop
Pcont = 250 bar - 420 bar

Series	CC	Rpm max.
MD10V14	14.0	3600
MD10V18	18.0	3600
MD10V21	21.0	3600
MD10V28	28.0	3600
MD10V50	50.0	3600
MD10V64	64.0	3600
HD1 055	55.0	4250
S6CV075	75.0	3600
S6CV128	128.0	3250



Axial Piston Pumps

Variable displacement - open loop
Pcont = 280 bar - 350 bar

Series	CC	Rpm max.
S5AV032	32.0	3150
S5AV045	43.3	2700
S5AV050	49.7	3000
S5AV063	64.0	2500
S5AV075	75.0	2250
S5AV090	93.8	2100

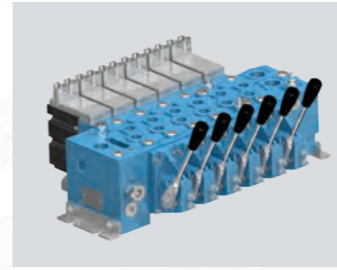


Gear Pumps/Motors

Gear motors
Flow dividers

Series	CC	Pmax.
OT100-GR1	0.73 - 9.7	300 bar
OT200-GR2	4.1-30.0	300 bar
OT 200 - silent	4.1-30.0	300 bar
OT300-GR3	22.0 - 90.0	300 bar

Directional Valves

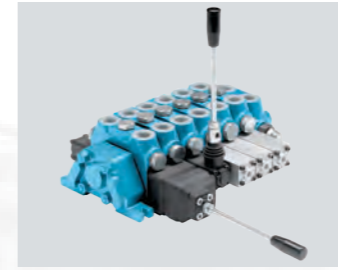


Proportional Valves

Open/closed centre
Pcont = 370 bar

Series	Inlet flow	Section flow
HPV41	250 l/min	130 l/min
HPV77	390 l/min	190 l/min
HPV310	600 l/min	550 l/min

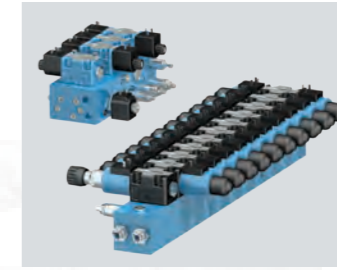
Wide range of electric controls.
Also available in ATEX version



Directional Valves

Open centre
Pcont = 350 bar - 400 bar

Series	Inlet flow	
DCV20	40l/min	monoblock
DCV40	70l/min	monoblock
DCV30	40l/min	modular
DCV50	70l/min	modular
DCV80	120l/min	modular
DCVMG	230l/min	modular



CETOP Valves

Cetop valves, Circuit selector,
Atex valves & Subplates

	Series	Flow	Pressure (bar)
cetop values	2/NG04	20	250
	3/NG06	80	350
	5/NG10	100-120	350
	7/NG16	300	350
	8/NG25	600	320
	circuit selector	ADL/CDL	80 250
atex values	AD3XG	80	250
subplates	BS/BM	20-600	250



Bankable Valves

On-off/proportional
Pcont = 310 bar

Series	Flow l/min	
CDC3	30	on/off compact
CD3	40	on/off
CX3	<20	proportional control
CXQ3	<25	proportional flow control

Proportional directional compensated ls line
Pmax = 300 bar - Flow 80 l/min

Series	Regulated flow	
CXDH3	<35	proportional compensated
CDH3	<26	on/off compensated
CFS3	<60	flow Sharing

Motors

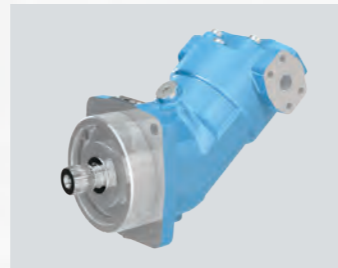


Axial Piston Motors

Variable displacement - open/closed loop
Pcont = 430 bar

Series	CC	Rpm max.
SH7V/R055*	61	4450
SH7V/R075*	80.6	4000
SH7V / R108 *	112.5	3550
SH7V / R160 *	160.8	3100
MD11V046	46	4000
MD11V050	50	4000
MD11V064	64	4000

* Motors can swivel to zero displacement



Axial Piston Motors

Fixed displacement - open/closed loop
Pcont ** = 350 bar Pcont * = 430 bar

Series	CC	Rpm max.
H1C-006**	6.1	6000
H1C-012**	10.9	5590
SH11C/R020 *	19.9	6300
SH11C/R030 *	31.9	6300
H1C-040**	40.1	4350
H1C-226 **	225.1	2400
SH11C/R055*	56.3	5000
SH11C/R063*	63.3	5000
SH11C/R075*	77.8	4500
SH11C/R090*	86.2	4500
SH11C/R108*	108.4	4000
SH11C/R125*	124.8	4000
SH11C/R160*	163.9	3600
SH11C/R180*	178.1	3600

Pumps available



Orbital Motors

Open/closed loop

Series	CC	Rpm max.	Torque max. (Nm)
BGM	13-15	1935	83
BG	50-400	1530	400
BR	50-400	970	750
HR	80-400	995	980
HT	160-500	780	1370
ARS /ARF	50-400	970	510

Compact units, gearboxes & electronics



Electronics

Electronic control systems

Series	Description
M82	Limiting device
TPV	Pressure sensor
VPL	Bar led display
IDXY	Tilt device
ASU	Angle/length transducer
MD93	Limiting device
TPE	Pin load cell
TD	Strain gauge transducer
OPUS	Graphic display
TAC	Angle sensor
MAV	Electronic control card



Support

Bellhousings & couplings

Series	Description
SU-IM	Belt & pully support
HL	Bellhousing
HE	Flexible couplings
8F-BFM	Splined bushing couplings



Compact Units

Mini powerpack / Micro powerpacks

Series	Pump/cc	Motor
MC2-MC4	0.25-9.8	DC/AC-B14
MK1-MK2	dockleveler units	
MH	4.0-25.0	AC-B5
FP	0.25-9.8	DC/AC- B14
EP-MP	pump DC motor combinations	
MR2-MR4	0.25-1.26	DC/AC- B14
MW-MW1	0.25-1.26	DC/AC- B14

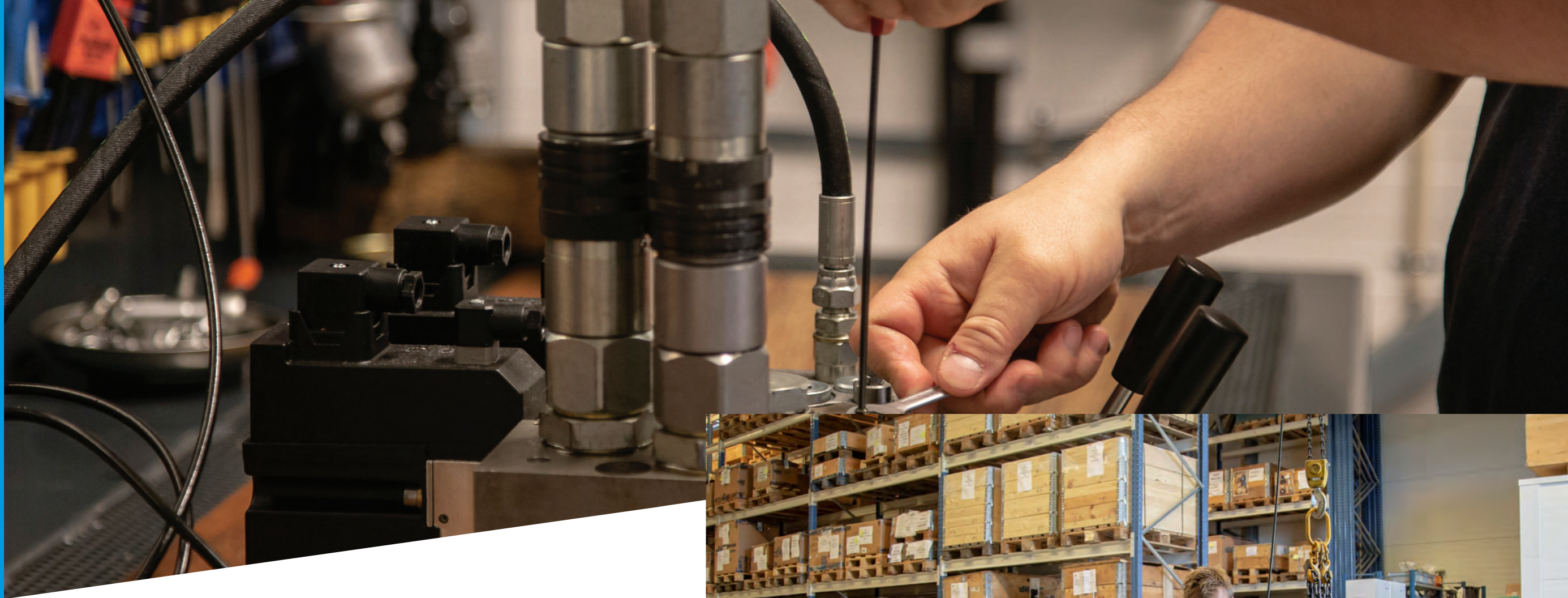


Gearboxes

Power take off

Series	Ratio (speed increase)	Power (KW)
ML32	1.5 - 3.8	10
ML52	1.0 - 3.8	30
B580	1 - 4.8	30
B600	1 - 3.8	50
B502	1 - 3.8	55
B582	1 - 3.8	55
B602	1 - 3.8	100
RD33	0.66 - 0.26	6
RD42	0.66 - 0.26	6
RD52	0.66 - 0.26	12

The technical data pages contain information regarding dimensions, performance etc. This data should be used as a guideline only, definitive data can be obtained from our sales office.



GEAR BOX SERVICING

Dana Service & Assembly Centres in Norway offer a complete aftermarket support for all Brevini® products as well as gearboxes of other manufacturers.

Maintain, Repair, Replace, Upgrade.

- Dedicated service and repair division
- Rapid and cost effective refurbishment of all gearbox types and manufacture
- Highly equipped gearbox service centres
- Fully trained and experienced service engineers
- Installation and commissioning support
- Site inspections and condition monitoring



SERVICE & REPAIR

Dana Service and Assembly Centre Norway offer a complete support for all Brevini products as well as gearboxes of other manufacturers.



People Finding A Better Way®

Dana SAC Norway
Elveveien 38, N-3262 Larvik

Tel: +47 33 11 71 00 | **E-mail:** breviniNO.sales@dana.com

BREVINI®

PIV®

SPICER®